

31st Year
Providing seedstock Red Angus Bulls



This sale will be broadcast live on the internet.

DVAuction

Broadcasting Real-Time Auctions

Real time bidding & proxy bidding available.

Sunday, March 26TH,

2023 2PM

At the Farm • Bagley, MN

DAHLKE RED ANGUS

- Breeding Soundness Exam • Carcass Ultrasounded • Performance Tested
- Complete Cow Herd Tested Johnes Free • BVD Tested Negative
- No Creep Feed • Free Delivery



Top Dollar Angus
Seedstock Producer



All bulls are DNA parent verified
with 50K genomic enhanced EPD's



Follow us on
facebook!

DAHLKE RED ANGUS

ANNUAL PRODUCTION SALE

SUNDAY, MARCH 26TH, 2023
2PM CST • AT THE FARM

Auctioneer

• Col. Matt Lowery
Burwell, NE
308-750-6119

Sale Day Phones

• Bryantt...218-533-0259
• Arlan.....218-556-5896
• Mike.....218-556-1891
• Ellen.....218-533-0145

Ringmen

• Will Bollum...507-244-0833
Western Ag Reporter
• Andrew Swanson...507-829-4133
MN Farm Guide

Sale Location

19505 400th street, Bagley, MN 56621
The sale will be held at the Dahlke Farm 5 miles north of Bagley, MN., 70 miles east of the North Dakota Border, 100 miles south of Canada.

Directions to Sale

From Bagley head 4 miles north on Hwy 92, then go east 2.5 miles on county road 1 (400th street). Farm is located on the south side of the road.

Lodging

Lodging is available within 25 miles in Fosston, Clearbrook & Bemidji.
LePier Lodge - Fosston 218-435-1088
Pipers Inn - Clearbrook 218-776-2323
Numerous hotels located in Bemidji.

Delivery

Free delivery in Minnesota & surrounding states. Beyond that we will assist in any way necessary to get the bull to your farm at cost. Delivery will begin the week following the sale unless other arrangements are made.

Feeding & Boarding

We will begin delivering animals the week following the sale. If you cannot take the animals when we arrange delivery, there will be a \$5/day charge for feed/board

Performance Data

Scrotal circumference will be available on sale day. ADG was taken on a 90 day test with a ration developed for a 3 pounds per day gain.

Lunch

Complimentary lunch will be served starting at 12:30.

Genetic Information

All bulls in the sale have had a 50K genomic test, & the EPD's listed reflect that. The test verifies parentage and increases the predictability of economically important traits.

Health

At birth the bulls received Ultrabac 8, Inforce 3, & Tri-shield. In the spring they received Ultrabac 8. Pre-weaning they received Naselgen 3 & Ultrabac 8 and were poured with Clean Up 2. In November they were poured with Cydectin.

The females were vaccinated with Ultrabac 8, Virashield 6L5. red They were ultrasounded for pregnancy on 8-3-2022. In the fall they were vaccinated with UltraBac 8 & poured with Clean Up 2. They were banded vaccinated last year as calves.

Guarantee

In the event a bull has fertility issues in the first breeding season or prior, a replacement bull or future sale credit will be provided when the defective bull is returned to us in a good state of health. All bulls will have passed a breeding soundness exam prior to delivery.

Insurance

We strongly encourage all buyers to insure their purchases.

Semen Interest

Dahlke Red Angus will retain 1/3 semen interest on all bulls for in herd use only unless otherwise stated on the auction block. 100% revenue sharing interest is being sold on all bulls.

Transfer of Registration Papers

All cattle sold on sale day will be transferred to their new owner through the breed association.

Risk

Anybody attending the sale does so at their own risk. Dahlke Red Angus will not be held responsible for any injuries or illnesses incurred from attending this sale.

Online Bidding & Viewing

Videos of the cattle will be available to view on DVAuction.com and dahlkeredangus.com. The sale will be broadcast live online with DVAuction. If you plan on bidding online, we strongly encourage you to call in the days leading up to the sale to talk about what bulls are best suited to fit your goals.

DVAuction
Broadcasting Real-Time Auctions

Visit www.DVAuction.com
and Register Today!

For General Questions Please Contact Our Office:
(402) 316-5460 or support@dvauction.com

Sale Order/Supplement Sheet

Sale order & Supplement sheet will be available on sale day. Any corrections to the catalog will be either printed on the supplement sheet or announced on the auction block. Announcements made sale day take precedent over any printed material in the catalog or otherwise.

EPD's

Catalog EPD's are current as of 3-1-2023. An updated EPD list will be available on sale day.

Sale Format

Cattle will sell inside our sale barn. Cattle will be on display outside in large pens for your appraisal. TV's will be set-up inside playing pre-recorded videos of each lot during the sale.

Calving Ease

5 star calving ease ... Recommended for heifers
4 Star calving ease ... Recommended for well developed heifers & cows
3 Star calving ease ... Recommended for cows
2 Star calving ease ... Recommended for cows
1 Star calving ease ... This would have resulted in the bull being cut and made into a steer.

Please bring your
catalog on sale
day!

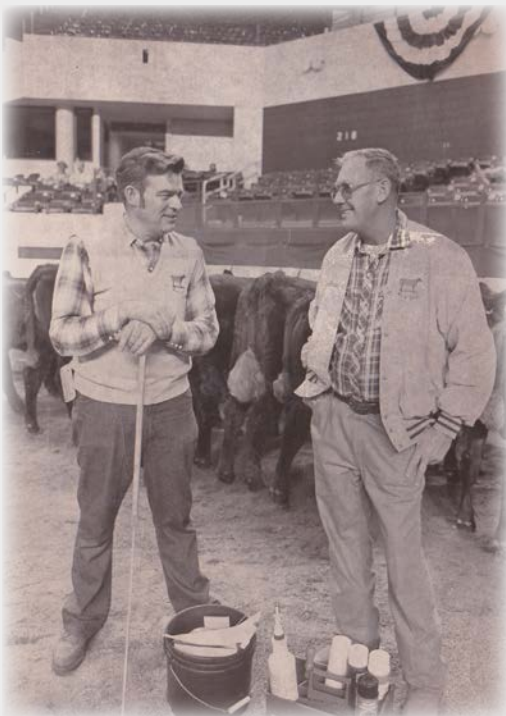
Welcome Cattlemen!

We, The Dahlke family, would like to invite you to our annual production sale, Sunday March 26th, 2023 here at the Dahlke farm in Bagley, MN. As I sit here today and write this, the feeder market continues to show strength and continued resilience. U.S and world demand for beef is at an all-time high. The nation's cowherd is at a 60 year low and the need & opportunity to grow back our commercial cow inventories is now. This is where we feel our bulls separate themselves from the others. They are maternally oriented, designed to last and create females that will provide the commercial cattleman with added value. Our cow herd is open to anybody who wants to view the cows behind these bulls and would encourage you to swing by anytime prior to check them out. All but one purebred lot in the sale is out of a Dahlke cow. We like our cows to be wedge shaped, structurally correct, with added fertility and docility. Cows that don't meet this criteria are moved to our recap pen where they will receive an embryo from a top Dahlke donor cow, given that they are still a functional animal. We pride ourselves on how long our cattle last in this tough northern environment. The average dam's age to the cattle in the sale is almost 7 years old, and although some breeders may sell their cows when they reach this age, we feel those cows are just starting to show their true worth and value.

This year marks our 3rd annual production sale, but our family has been marketing registered breeding stock since the 1970s' and have been focused solely on the red angus breed since 1992. Many of the top cow families here today trace back to those foundation cows Arlan purchased 30+ years ago. You can find females from the Birdie, Hilton, Rosie, Sandy & Sara cow lines in many programs across the U.S that would trace back to our farm.

We think this group of bulls and females is as complete as we've ever produced and are excited to show them to you. We encourage you to view the videos online at DVAuction.com. The cattle will be on display Sunday March 26th and buyers will be able to bid in person, on the phone, or online at dvauction.com. We look forward to seeing and talking to everybody on sale day.

~ Bryantt Bolduc, Dahlke Red Angus



Over the years Arlan's hair might have turned a little more white but the cows still look the same. Pictured above is the 7139 cow in 1989, displaying the same wedge shape design that we value today. Pictured left is Arlan and the late Ed First from Shelbyville, KY in 1988 showing cattle at the NAILE in Louisville, KY.

Reference Sires



5L Foreman 2174 - 370E - Sire of lots 1-5



Bieber CL Energize F121- Sire of lot 6



5L Capitalist 525-225F Sire of lots 14-16, 29-30



Red U2 Reckoning - Sire of Lot 7-8



Red U2 Malbec 195D Sire of lot 32



Bieber Stockmarket E119 - Sire of lots 17-19



Dahlke Rockefeller 009H - Service sire of lots 28-29



Dahlke Outcome 016H - Service sire of lot 26

Lot
1

GGP

Dahlke Working Class 231K



CED	BW	WW	YW	Milk	HPG	Stay	Marb	CW	REA	ProS	HB	GM
12	1.1	100	161	30	15	13	.20	62	.76	82	36	46
57%	93%	1%	1%	13%	6%	75%	94%	1%	1%	67%	84%	32%

BW: 85 WW: 768 YW: 1350 ADG Ratio: 118
 Dam bred first straw AI 2 out of 2 (Flushed the third year) Dam's Age: 4
 3 Star Calving Ease Dec. 1st weight : 918

Reg. #4606967
 231K/BOLD
 02-28-2022

5L BOURNE 117-48A (5L ADVANTAGE SIRE)
 SIRE: 5L FOREMAN 2174-370E
 5L ADINA 1551-2174 (OCC EMBLAZON 854E SIRE)
 SAV RAINDANCE 6848 (COLEMAN CHARLO SIRE)
 DAM: DAHLKE MS LAKINA 92G
 DAHLKE MS LAKINA 268C (FEDDES BIG SKY SIRE)



Dam of Lot 1 (this fall)

Ribeye	Marbling
13.79"	2.02%

It is no secret that those of us in the beef cattle industry get paid by the pound. It is a real feat to have a bull that can sire progeny that'll push down the scales and outperform other sire groups no matter what cow they are bred to. That is what we feel Working Class 231K can do & do it in a way that isn't overly extreme in frame size or birthweight. When it comes to profitability in the cow herd, fertility is the number one force. Cows that get bred on time wean more pounds and stay in the herd for a long time. The cows that stand behind 231K have did just that, with his maternal granddam producing until 8, great granddam 10, great great granddam 11 & his paternal granddam producing until 16. Not only have they stuck around for a long time but they have excelled at weaning a higher percentage of pounds every year. His dam has a 109 MPPA, granddam 110, & great granddam 106 in a highly competitive herd where no cow scores over a 110 mppa. His genomically enhanced EPD's back this up with an extreme top 1% WW, YW, CW, REA and a Heifer pregnancy that ranks in the top 6% of the breed. People that follow our program know that we like to take top Angus genetics and turn them red. Working Class 231K goes back to OCC Emblazon 854E, Coleman Charlo, OCC Paxton, SAV Blackcap May 4136 & SAV Raindance 6848. We expect more great things out of his dam as we have 7 calves coming from her this spring. This is a bull we are very excited about and a bull we plan on using heavily back into our own program.

Dahlke In Charge 212K

GGP

Lot

2



CED	BW	WW	YW	Milk	HPG	Stay	Marb	CW	REA	ProS	HB	GM
11	-1.1	71	121	29	13	20	.51	35	.08	117	67	50
73%	64%	15%	8%	23%	27%	5%	28%	13%	60%	15%	25%	25%

Ribeye	Marbling
12.97"	2.61%

BW: 88 WW: 709 YW: 1289 ADG Ratio: 126
 Dam's Calving Interval 8 @ 357 days Dam's Age: 10
 3 Star Calving Ease Dec. 1st Weight: 1020

Reg. #4606927
 212K/BOLD
 02-02-2022

5L BOURNE 117-48A (5L ADVANTAGE SIRE)
 SIRE: 5L FOREMAN 2174-370E
 5L ADINA 1551-2174 (OCC EMBLAZON 854E SIRE)
 JACOBSON BASIN 1173 (BASIN HOB0 79E GRANDSON)
 DAM: DAHLKE MS SANDY 228A
 DAHLKE TRENDY SANDY 127U (BASIN TRENDSETTER)



Dam of lot 2

This Foreman sire group really pushes the needle forward when it comes to overall mass and explosive average daily gain on feed test. As a sire group the bulls averaged 9% above the average for gainability and the females are the standouts in the replacement heifer pen as well. Foreman consistently sires a jet black hoof with really good claw shape and heel depth. Dahlke In Charge 212K is no exception as he stands down on a near flawless foot. His 10 year old dam, sporting a calving interval of 357 days, is a favorite around here and a cow that has earned her right to enter the donor pen this spring. She's about as pretty fronted as you can make one, long spined, wide pinned standing down on a big, correct made black hoof. Everybody who has seen this cow falls in love with her and we have sold some of her daughters to the Connor family in Michigan that have earned multiple purple bannors for them. We are retaining a top U2 Malbec sired daughter of hers this year that we anxiously are awaiting to calf. 228A is also a maternal sister to the dam of Dahlke Outcome 016H (Semex). 212K's granddam and great granddam have also produced until the age of 9 and 10 helping verify his 20 stayability EPD ranking in the top 5% of the breed. This pedigree is loaded with breed legends from the Glacier, Ohlde, Basin & Melhoff herds. Expect heavy bull calves and females that last a long time from this herd sire prospect.

Lot

GGP

Dahlke Foreman 218K

3

5L BOURNE 117-48A (5L ADVANTAGE SIRE)
SIRE: 5L FOREMAN 2174-370E
5L ADINA 1551-2174 (OCC EMBLAZON 854E SIRE)

5L CAPITALIST 525-225F (LD CAPITALIST 316 SIRE)
DAM: DAHLKE MS BIRDIE 034H
DAHLKE MS BIRDIE 36F

Another big time growth son of Foreman, ranking in the top 4% for both WW & YW. We typically don't have too many sons out of first calf heifers on the sale but this girl raised a good one! Shes a granddaughter of LD Capitalist 316 with an excellent udder and solid feet.



Ribeye	Marbling
11.72"	3.14%

CED	BW	WW	YW	Milk	HPG	Stay	Marb	CW	REA	ProS	HB	GM
9	1.6	79	129	26	14	13	.25	31	.40	59	28	31
93%	96%	4%	4%	45%	10%	79%	87%	23%	8%	93%	92%	64%

BW: 88 WW: 676 YW: 1167 ADG Ratio: 107
Dam bred back AI as a first calver Dam's Age: 3
3 Star Calving Ease Dec. 1st Weight: 846

Reg. #4606993
218K/BOLD
02-11-2022

Lot

4

5L BOURNE 117-48A (5L ADVANTAGE SIRE)
SIRE: 5L FOREMAN 2174-370E
5L ADINA 1551-2174 (OCC EMBLAZON 854E SIRE)

MLK CRK REDSTONE
DAM: DAHLKE MS HILTON 263C
DAHLKE MS LOVEBIRD 200Y

Lots 4 & 5 are full ET brothers out of a lead donor here, Dahlke Ms Hilton 263C. 251K was born in late march so he's a little younger than most of the bulls on the sale but don't hold that against him as he should sire breed leading growth with fertile, long lasting females. This dark red Foreman son might be one of the top bang for your buck bulls on sale day.

Ribeye	Marbling
10.94"	2.89%

CED	BW	WW	YW	Milk	HPG	Stay	Marb	CW	REA	ProS	HB	GM
12	2.1	80	129	31	16	18	.48	34	.22	116	68	47
68%	97%	3%	4%	11%	4%	17%	34%	13%	30%	17%	24%	29%

BW: 87 WW: 741 YW: 1164 ADG Ratio: 93
Dam's Calving Interval: 18 Calves - Donor Dam's Age: 8
3 Star Calving Ease Dec. 1st Weight: 814

Reg. #4606965
251K/BOLD
03-28-2022

Lot

5



5L BOURNE 117-48A (5L ADVANTAGE SIRE)
SIRE: 5L FOREMAN 2174-370E
5L ADINA 1551-2174 (OCC EMBLAZON 854E SIRE)

MLK CRK REDSTONE
DAM: DAHLKE MS HILTON 263C
DAHLKE MS LOVEBIRD 200Y

This Foreman son has the look of a true female maker. He's extended through his front 1/3, and carries a big barreled ribcage. A full ET sister is a standout in the replacement heifer pen. All these Foreman sons look to have a good foot shape, designed to last a long time.

Ribeye	Marbling
11.64"	3.45%

CED	BW	WW	YW	Milk	HPG	Stay	Marb	CW	REA	ProS	HB	GM
11	-1.2	60	97	31	16	20	.47	36	.39	120	71	49
76%	63%	54%	51%	11%	4%	5%	36%	11%	9%	13%	20%	26%

BW: 84 WW: 604 YW: 1063 ADG Ratio: 101
Dam's Calving Interval: 18 Calves - Donor Dam's Age: 8
4 Star Calving Ease Dec. 1st Weight: 832

Reg. #4607003
226K/BOLD
02-25-2022

Dahlke Foreman 226K

Dahlke Rancher 214K

GGP

Lot

6



CED	BW	WW	YW	Milk	HPG	Stay	Marb	CW	REA	ProS	HB	GM
20	-4.9	67	123	26	13	17	.67	24	.43	145	73	73
1%	7%	25%	7%	42%	24%	26%	9%	45%	6%	2%	17%	4%

Ribeye	Marbling
15.61"	3.64%

BW: 61 WW: 644 YW: 1166 ADG Ratio: 105
 Dam's Calving Interval 3 @ 354 days (All AI Sired) Dam's Age: 5
 5 Star Calving Ease Dec 1st Weight: 906

Reg. #4575779
 214K/ARD
 02-04-2022

BIEBER CL ATOMIC C218
 SIRE: BIEBER CL ENERGIZE F121
 BIEBER CL ADELLE 575D

BIEBER DEEP END B597
 DAM: DAHLKE MS BIRDIE 23F
 DAHLKE MS BIRDIE 233B



Bieber Deep End B597 - maternal grandsire

We only have the one Energize son in the sale but boy is he a dang good one. He's long bodied, sound structured with an excellent disposition and good footed. You couldn't design a rear leg better than what this guy has and when you see his dam you'll that see that good structure runs deep in his lineage. 23F is a young cow that has us excited and have high hopes for if she continues producing like she has. One of the most phenotypically correct cows you'll find with perfect, jet black feet and as good of an udder as you can make. In fact earlier today as I write these foot notes we had another breeder here and they shared the same thoughts about this cow as we do. We believe 214K to be a true sleep all night heifer bull that will not sacrifice growth or post weaning gainability. Genomically he ranks in the top 10% of the breed in 10 different catagories, and is a bull that should get some attention from some of the best cattlemen. Interesting side note is that he goes back to the great Bieber Laura 158W on both the top and bottom side of his pedigree. One of the top scanning bulls in the offering with a 15.61" Ribeye with 3.64% Marbling!

Lot

GGP

7

RED U-2 RECON 192Y
SIRE: RED U2 RECKONING 149A
RED U-2 ANEXA 271Y

3SCC GREVIOUS B32
DAM: DAHLKE ROSIE 27D
DAHLKE NORSE ROSIE 214Z

Here's the perfect bull for a rancher who appreciates heavy muscling, good feet and a good cow behind the bull. Rocky 223K is out of a solid 7 year old cow that has stuck AI every year of her life and flat out gets it done. He combines top shelf Canadian genetics on both the top and bottom of his pedigree which is more than likely why his EPD's dont translate to what you see in the flesh. We paid \$225 a straw for the Reckoning semen on the U2 dispersal and have been using it on some top cows. On the Bottom side he goes back to the great HF Kodiak bull and our 214Z Donor that turned 11 this spring. Keep all the daughters from this bull.

Ribeye	Marbling
12-88"	2-27%

CED	BW	WW	YW	Milk	HPG	Stay	Marb	CW	REA	ProS	HB	GM
6	0-1	53	77	33	11	17	32	26	11	83	65	19
99%	84%	75%	86%	4%	63%	30%	72%	40%	53%	65%	31%	86%



BW: 95 WW: 696 YW: 1127 ADG Ratio: 100
Dam's Calving Interval 5 @ 367 Days (All AI Sired) Dam's Age: 7
2 Star Calving Ease Dec 1st Weight: 890

Reg. #4575775
223K/ARD
02-21-2022

Lot

GGP

8

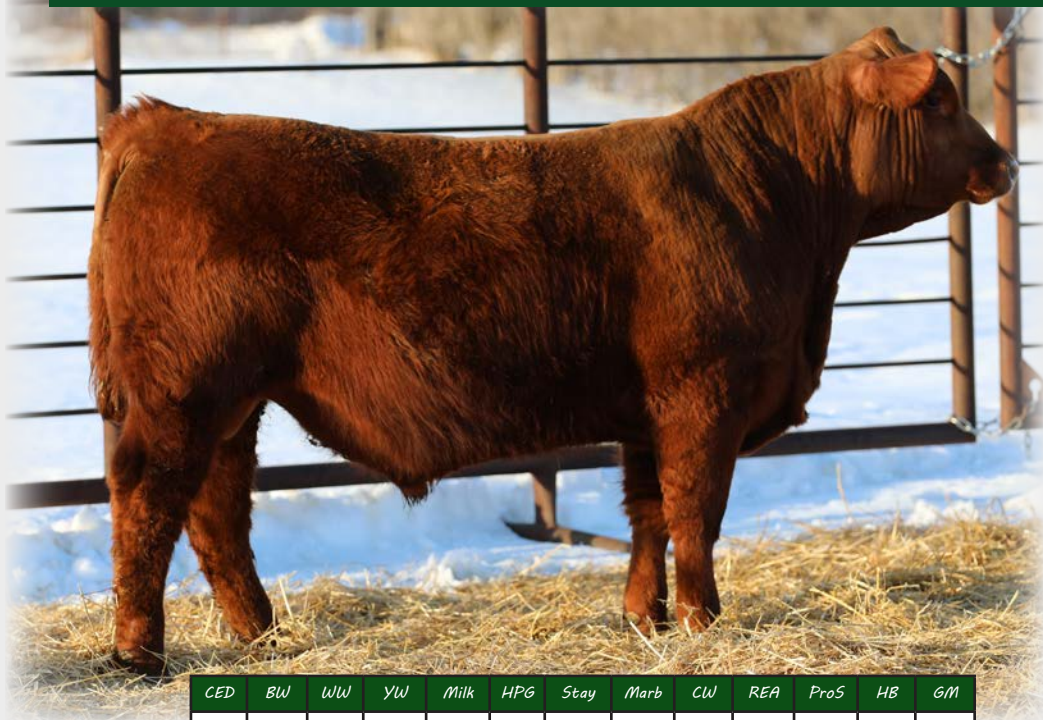
RED U-2 RECON 192Y
SIRE: RED U2 RECKONING 149A
RED U-2 ANEXA 271Y

OHRD DAKOTA COPPER 29K
DAM: DAHLKE DAKOTA SARA 120U
DAHLKE MAJOR SARA 75S

Another Reckoning sired bull that the good cowboys will appreciate for his extra muscle shape and sound foot. 208K's dam is the old matron here at the Dahlke Red Angus after turning 15 years old this spring. A true poster girl for fertility as she has bred AI every year of her career, never being serviced by a clean up bull. She's as sound footed as you can make them and has excellent maternal instincts. Even at 14 years old last summer she was the lead cow when we would move the cows to a new pasture, showing off her incredible athletic travel. Two of her first sons we sold were still servicing cows at over 10 years of age.

Ribeye	Marbling
13-29"	2-28%

Dahlke Reckoning 208K



CED	BW	WW	YW	Milk	HPG	Stay	Marb	CW	REA	ProS	HB	GM
9	0-0	46	62	33	9	15	31	24	24	69	50	19
92%	83%	90%	96%	3%	90%	56%	75%	47%	26%	85%	61%	85%

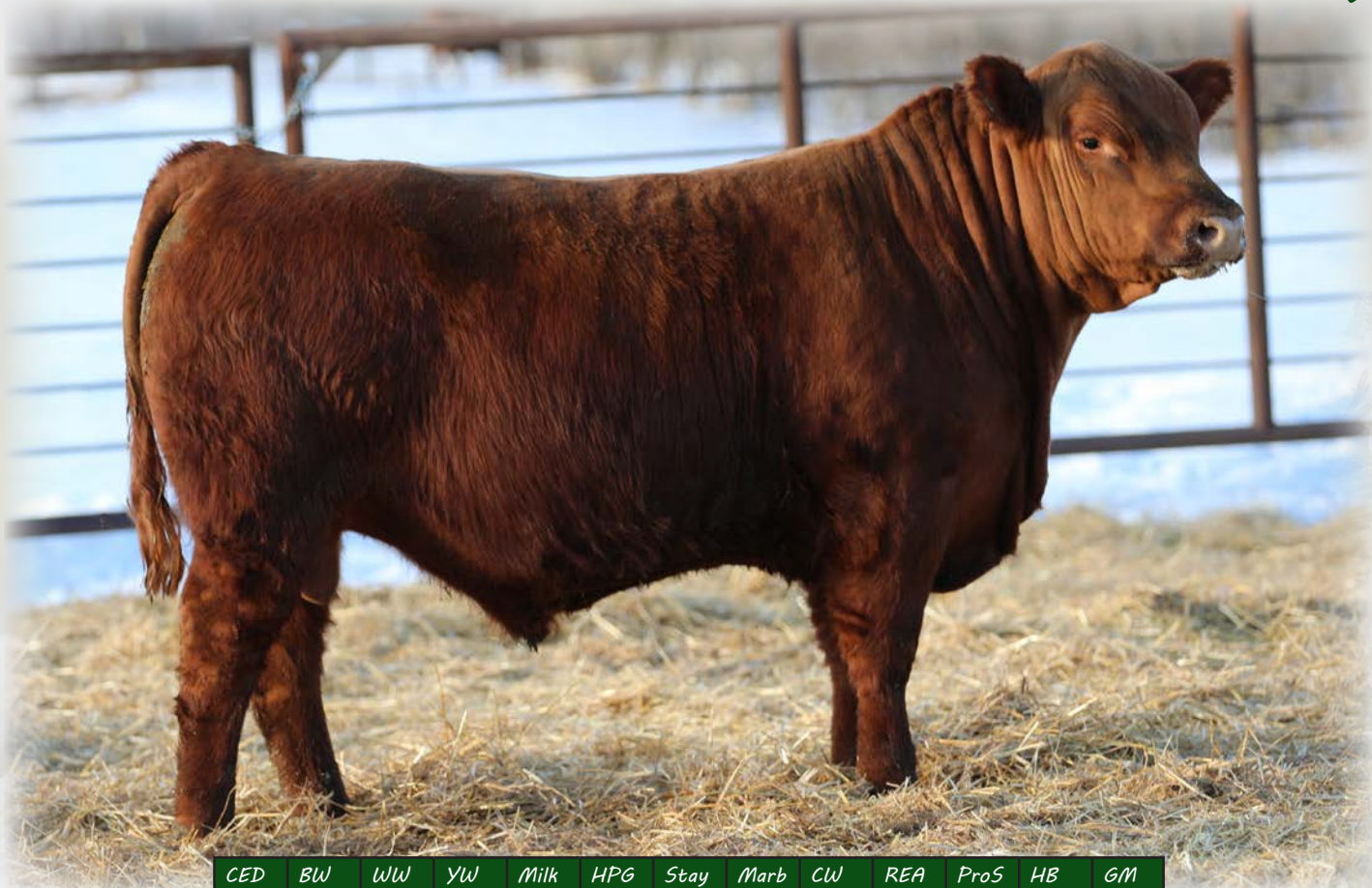
BW: 95 WW: 660 YW: 1075 ADG Ratio: 95
Dam's Calving Interval 13 @ 364 Days (All AI Sired) Dam's Age: 15
3 Star Calving Ease Dec 1st Weight: 874

Reg. #4575769
208K/ARD
01-28-2022

Dahlke Spartan 84K

GGP

Lot
9



CED	BW	WW	YW	Milk	HPG	Stay	Marb	CW	REA	ProS	HB	GM
9	-0.3	67	104	26	10	14	.59	29	-.10	86	46	40
89%	78%	28%	36%	49%	83%	70%	17%	26%	92%	60%	68%	43%

Ribeye	Marbling
12.16"	3.95%

BW: 95 WW: 804 YW: 1229 ADG Ratio: 101
Dam's Calving Interval 6 @ 366 Days Dam's Age: 8
3 Star Calving Ease Dec. 1st Weight: 940

Reg. #4619921
84K/GDRA
02-26-2022

BIEBER SPARTACUS A193
SIRE: BIEBER SPARTAN E639
BIEBER RENEE 477A

ANDRAS FUSION
DAM: 3SCC HEIDI C64
3SCC HEIDI A82



Bieber Spartan E639 - Sire of lot 9

Spartan E639 is a bull we have come to appreciate for his ability to sire extra muscle, carcass qualities, and sound foot shape. This Spartan son weaned off his 8 year old dam at 804 Pounds and maintained a respectable 101 ADG ratio. We sold a maternal brother two years ago to Rohrich's Cutting Edge Ranch that had the highest actual marbling scan we had produced at that time. 84K is a bull you will appreciate for his natural muscle expression, added base width in a moderate frame size that won't get too big as he matures. He has the excellent disposition that we have come to expect from the Spartacus lineage. Our first Spartan daughters are calving their second calves and so far are passing the test for fertility and foot quality. Use this bull to add payweight at weaning and sound structured replacement females.

Lot

10

GGP

Dahlke Atomize 205K

Atomic continues to see use here as his progeny have proven to work in our enviroment. 205K is no exception, coming across the scale at 1,040 on December 1st out of a first calf Capitalist sired female that did a whale of a job. She bred back AI right away and has a Rockefeller sired calf at side. She's at the top of the list for foot and udder quality and has definetly passed on her superior foot shape to her first son. As you've probably noticed, Lots 1, 3, 6, 10 & 17 are all pictured bulls that all go back to the same great Birdie cow family. Expect some added prepotency from these sons as the quality is seen from end to end on this cow family. 205K has an Elite EPD profile, going from top 14% Calving ease direct to top 2% for WW & 1% YW. If extra frame size is a priority for you then this calf should be at the top of your list. Big Time Curve Bender!



ANDRAS FUSION R236
SIRE: BIEBER CL ATOMIC C218
BIEBER DATELINE 308Y

5L CAPITALIST 525-225F (LD CAPITALIST 316)
DAM: DAHLKE MS BIRDIE 027H
DAHLKE MS LAKINA 268C



LD Capitalist 316

Ribeye	Marbling
15-23"	2-53%

CED	BW	WW	YW	Milk	HPG	Stay	Marb	CW	REA	ProS	HB	GM
16	-1.8	82	137	33	10	12	.25	37	.02	63	31	32
14%	50%	2%	1%	4%	83%	85%	87%	8%	74%	90%	90%	61%

BW: 71 WW: 768 YW: 1295 ADG Ratio: 117
Dam Bred Back AI as a first calf heifer Dam's Age: 3
4 Star Calving Ease Dec. 1st Weight: 1040

Reg. #4606987
205K/BOLD
01-24-2022

Lot

11



GGP

Dahlke Atomic 204K

ANDRAS FUSION R236
SIRE: BIEBER CL ATOMIC C218
BIEBER DATELINE 308Y

SAV RESOURCE 1441
DAM: DAHLKE MS TJ 90G
DAHLKE MS TJ 207Z

We kept 5 Black-Red Carriers for the sale and 204K combines SAV Resource and Atomic. Black-Red Carrier means he will sire 100% black calves bred to a Homozygous black cow, 75% black calves bred to a Heterozygous black cow, and 50% black calves bred to red cows. 204K is a full brother to the \$11,500 heifer calf we sold on the ND Red Select Sale to Hansine Ranch. Excellent EPD spread on this heifer safe prospect combining top calving ease and growth numbers.

Ribeye	Marbling
11-81"	2-75%

CED	BW	WW	YW	Milk	HPG	Stay	Marb	CW	REA	ProS	HB	GM
13	-3.3	71	118	27	10	14	.42	41	.21	96	48	48
39%	23%	15%	11%	35%	80%	67%	47%	4%	32%	44%	64%	28%



BW: 77 WW: 661 YW: 1089 ADG Ratio: 94
Dam's Calving Interval 2 @ 373 Days (All AI Sired) Dam's Age: 4
5 Star Calving Ease Dec. 1st Weight: 868

Reg. #4606969
204K/BOLD
01-23-2022

Dahlke Stellar 245K

GGP

Lot

12



MOHNEN SUBSTANTIAL 272
SIRE: SITZ STELLAR 726D
SITZ PRIDE 200B

BIEBER CL ATOMIC C218
DAM: DAHLKE MS HILTON 13F
DAHLKE MS HILTON 263C

Every year we choose a Black Angus bull to use on some of our best red cows to further expand our genetic gene pool. Last year that bull was Sitz Stellar 726D, a proven maternal bull that will improve udder and foot quality in a calving ease package. Lots 12 and 13 are full embryo transfer brothers that take the crown for EPD spread, going from -3 BW to 130 YW. Keep all the daughters from these two bulls as they combine two very good cow families.
Black-Red Carrier

CED	BW	WW	YW	Milk	HPG	Stay	Marb	CW	REA	ProS	HB	GM	Ribeye	Marbling
13	-2.9	82	135	25	11	17	.61	48	.16	140	73	66	13.42"	2.93%
51%	30%	2%	2%	59%	48%	24%	14%	1%	42%	3%	16%	7%		

BW: 83 WW: 703 YW: 1154 ADG Ratio: 96
Dam's Calving Interval - Donor Dam's Age: 5
5 Star Calving Ease Dec 1st Weight: 802

Reg. #4606955
245K/BOLD
03-20-2022

Dahlke Stellar 225K

GGP

Lot

13



MOHNEN SUBSTANTIAL 272
SIRE: SITZ STELLAR 726D
SITZ PRIDE 200B

BIEBER CL ATOMIC C218
DAM: DAHLKE MS HILTON 13F
DAHLKE MS HILTON 263C

Lot 13 is a long bodied individual with some added thickness. We have some full ET sisters in the replacement pen and are really excited about their maternal merit. All of the flushmates have that smooth front shoulder design and I can say with confidence that these two brothers are safe to use on heifers.
Black-Red Carrier



Paternal granddam to lots 12 & 13

CED	BW	WW	YW	Milk	HPG	Stay	Marb	CW	REA	ProS	HB	GM	Ribeye	Marbling
13	-3.1	79	130	25	11	17	.61	48	.16	138	73	65	12.01"	2.51%
51%	26%	4%	3%	59%	48%	24%	14%	1%	42%	4%	17%	8%		

BW: 78 WW: 712 YW: 1136 ADG Ratio: 96
Dam's Calving Interval - Donor Dam's Age: 5
4 Star Calving Ease Dec 1st Weight: 882

Reg. #4606943
225K/BOLD
02-23-2022

Lot

GGGP

Dahlke Cap 316 238K

14

LD CAPITALIST 316
SIRE: 5L CAPITALIST 525 - 225F
5L ADINA 853-525

HA COWBOY UP 5405
DAM: DAHLKE MS TJ 20F
DAHLKE MS TJ 207Z

One of my favorites here. If added thickness and masculinity are two of your top priorities when it comes to buying a new herd sire, then check this guy out. 238K combines HA Cowboy Up 5405 and LD Capitalist 316, two angus bulls we have used in the past to add new blood. The dam, 20F, is a top end female excelling in pounds weaned, foot quality, and udder quality. This bull was tested heterozygous black.

Black - Red Carrier



Maternal grandsire to lot 14



Ribeye	Marbling
13.09"	2.23%

CED	BW	WW	YW	Milk	HPG	Stay	Marb	CW	REA	ProS	HB	GM
13	0.5	77	121	23	11	18	.24	39	.34	93	60	33
51%	88%	6%	8%	77%	50%	19%	89%	6%	13%	48%	39%	59%

BW: 90 WW: 725 YW: 1194 ADG Ratio: 93
Dam's Calving Interval 3 @ 373 Days (Stuck AI 1 out of 3) Dam's Age: 5
3 Star Calving Ease Dec. 1st Weight: 860

Reg. #4606953
238K/BOLD
03-12-2022

Lot

GGGP

Dahlke Cap 316 254K

15

LD CAPITALIST 316
SIRE: 5L CAPITALIST 525 - 225F
5L ADINA 853-525

SAV RAINDANCE 6848
DAM: DAHLKE MS HILTON 74G OF 263C
DAHLKE MS HILTON 263C

Tested Homozygous Black, this bull will not throw any red calves. 254K combines LD Capitalist 316 and SAV Raindance along with our 74G donor cow from the Hilton cow family. Capitalist 316 is currently 10 years old and still standing at world west producing semen that is in high demand globally. Younger calf that gained well, don't sell him short because of his age. Black Hided. Homo Black

CED	BW	WW	YW	Milk	HPG	Stay	Marb	CW	REA	ProS	HB	GM
14	-1.3	63	100	26	12	13	.25	36	.50	77	39	38
32%	61%	40%	44%	48%	37%	78%	87%	11%	4%	74%	80%	48%

Ribeye	Marbling
12.37"	3.02%

BW: 84 WW: 708 YW: 1152 ADG Ratio: 100
Dam's Calving Interval - Donor Dam's Age: 4
5 Star Calving Ease Dec. 1st Weight: 688

Reg. #4606981
254K/BOLD
04-17-2022

Lot

GGGP

Dahlke Cap 316 243K

16

LD CAPITALIST 316
SIRE: 5L CAPITALIST 525 - 225F
5L ADINA 853-525

5L BOURNE 117-48A
DAM: DAHLKE MS SARA 72G OF 120U
DAHLKE DAKOTA SARA 120U

Back into the red bulls, 243K is an outcross bloodline to most of the red angus breed combining LD Capitalist 316 and the high fertility Sara cow family. Capitalist 316 is a 10 year bull that is still sound, excellent footed and still producing semen. The maternal granddam to 243K is still here producing at 15 years old.

CED	BW	WW	YW	Milk	HPG	Stay	Marb	CW	REA	ProS	HB	GM
15	-2.6	64	93	29	14	11	.37	21	-.06	49	37	12
21%	34%	37%	59%	18%	15%	92%	61%	60%	87%	97%	83%	93%

Ribeye	Marbling
11.98"	2.49%

BW: 80 WW: 708 YW: 1114 ADG Ratio: 91
Dam's Calving Interval 2 @ 420 Days (Stuck AI 1 out of 2) Dam's Age: 4
5 Star Calving Ease Dec. 1st Weight: 750

Reg. #4606973
243K/BOLD
03-18-2022

Dahlke Dividend 210K

GGP

Lot
17



CED	BW	WW	YW	Milk	HPG	Stay	Marb	CW	REA	ProS	HB	GM
13	-2.1	66	104	25	8	19	.85	9	.09	113	70	43
47%	45%	31%	34%	57%	94%	10%	2%	92%	59%	19%	21%	37%

Ribeye	Marbling
14.24"	5.90%

BW: 83 WW: 612 YW: 1099 ADG Ratio: 100
Dam's Calving Interval 7 @ 356 Days (Stuck AI 4 out of 7) Dam's Age: 9
5 Star Calving Ease Dec. 1st Weight: 872

Reg. #4606931
210K/BOLD
01-31-2022

PIE STOCKMAN 4051
SIRE: BIEBER CL STOCKMARKET E119
BIEBER CL ADELLE 475C

DAHLKE BOXCAR WILLIE 8538
DAM: DAHLKE MS BIRDIE 250B
DAHLKE MS BIRDIE 162X



Dam of lot 17

Dividend 210K leads the Stockmarket sire group with his wide base, dense body design. A good footed individual, 210K comes from the good Birdie cow family that has brought us lots of good ones again this year. His dam is a powerfully constructed 9 year old cow that combines the 106 MPPA 162X Sakic sired cow and the 120U cow, a 15 year old fertility queen here. Stockmarket sired progeny have been blowing up the sale reports, showing a desire from commercial cattlemen for low birth, high growth type bulls. Expect calves that are the deep soggy type and replacement females that are real milky with excellent dispositions.

Lot

GGP

Dahlke Stockmarket 213K

18

PIE STOCKMAN 4051
SIRE: BIEBER CL STOCKMARKET E119
BIEBER CL ADELLE 475C

BECKTON EPIC R397 K
DAM: DAHLKE MS BIRDIE 232B
DAHLKE MS BIRDIE 194Y

Sure fire heifer bull with a 79 pound birth-weight and a top 4% CED and BW EPD. Dam is a real moderate made 5 frame female that turned 9 years old this spring and has been a solid producer for us with a 361 day calving interval.



Ribeye	Marbling	CED	BW	WW	YW	Milk	HPG	Stay	Marb	CW	REA	ProS	HB	GM
13-67"	2-91%	18	-5.4	67	107	25	10	18	.79	18	.29	133	77	55
		4%	4%	25%	28%	58%	83%	13%	4%	72%	19%	5%	12%	17%

BW: 79 WW: 621 YW: 1050 ADG Ratio: 95
Dam's Calving Interval 7 @ 361 Days (Stuck AI 5 out of 7) Dam's Age: 9
5 Star Calving Ease Dec. 1st Weight: 860

Reg. #4606933
213K/BOLD
02-02-2022

Lot

19

Dahlke Stockmarket 85K

PIE STOCKMAN 4051
SIRE: BIEBER CL STOCKMARKET E119
BIEBER CL ADELLE 475C

DAHLKE BOXCAR WILLIE 8538
DAM: DAHLKE GDRA MISTY 913-18B
MISTY

Another bet the ranch heifer bull at 19 CED and -6.7 BW. Dam is a solid 9 year old cow who raises a good one every year and raised our lot 1 Warrior bull last year.



Ribeye	Marbling	CED	BW	WW	YW	Milk	HPG	Stay	Marb	CW	REA	ProS	HB	GM
12-78"	4-05%	19	-6.7	42	72	23	8	18	.83	7	.06	129	77	52
		2%	1%	94%	90%	71%	96%	14%	3%	94%	65%	7%	13%	21%

BW: 65 WW: 625 YW: 1063 ADG Ratio: 88
Dam's Calving Interval 7 @ 358 Days (Stuck AI 3 out of 7) Dam's Age: 9
5 Star Calving Ease Dec. 1st Weight: 762

Reg. #4619919
85K/GDRA
02-27-2022

Dahlke Got R Done 221K

GGP

Lot
20



CED	BW	WW	YW	Milk	HPG	Stay	Marb	CW	REA	ProS	HB	GM
13	-2.2	53	86	37	14	14	.67	12	.29	102	47	55
50%	43%	76%	72%	1%	14%	72%	9%	87%	19%	35%	66%	17%

Ribeye	Marbling
13-23"	2.78%

BW: 76 WW: 640 YW: 1102 ADG Ratio: 106
Dam's Calving Interval 9 @ 365 Days (Stuck AI 5 out of 9) Dam's Age: 11
5 Star Calving Ease Dec. 1st Weight: 830

Reg. #4575771
221K/ARD
02-18-2022

BECKTON LIKABLE C643 L3

SIRE: 5L GOT R DONE 2146 - 313F
5L DYNABELLE 1804-2146

DAHLKE NORSE STYLE 169X

DAM: DAHLKE NORSE ROSIE 214Z
DAHLKE UE ROSIE 230J



Maternal Sister to Lot 20

After watching the Got R Done's sell at 5L ranch in 2021, we decided we would use him AI that spring. These sons are going to be heifer safe, moderate in frame, massive through their ribcage, and the easy fleshing type. If you retain interest and sell your calves on the grid, these sons might be just what you need as they will marble and cut a big ribeye. Pretty consistent genomic data tells us that the daughters are going to be real milky and fertile as well. We lead off this sire group with 221K, a dark cherry red bull out of an 11 year old cow that we flushed to Rockefeller last spring. The granddam to this bull is a 1999 model cow that was one of the heifer calves that Arlan retained during his cow sale in the fall of '99. That seems so long ago but yet here she is as the granddam in this bull's pedigree. We retained a U2 Malbec sired maternal sister this year that we have high hopes for. Maternal brother sold as lot 2 last year and two maternal sisters have sold on state select red Angus sales.

Lot **GGP**

21

Dahlke Got R Done 228K



Granddam of lot 21



This bull has a true heifer safe look to him, small skulled & smooth shouldered. He has a real flashy profile that is correct in his angles and travels well. Combines the good Schaff Angus Valley genetics with proven calving ease red angus bloodlines. The dam to this bull is a big hippped, bold sprung female with impeccable udder structure.

BECKTON LIKABLE C643 L3
SIRE: 5L GOT R DONE 2146 - 313F
5L DYNABELLE 1804 - 2146
SAV RAINDANCE 6848
DAM: DAHLKE MS HILTON 74G OF 263C
DAHLKE MS HILTON 263C

Ribeye	Marbling
12-16"	3-01%

CED	BW	WW	YW	Milk	HPG	Stay	Marb	CW	REA	ProS	HB	GM
14	-0.5	64	103	34	13	17	-69	11	-25	108	56	52
30%	75%	37%	38%	2%	18%	33%	8%	89%	25%	26%	47%	22%

BW: 82 WW: 615 YW: 1023 ADG Ratio: 96
Dam's Calving Interval - Donor Dam's Age: 4
5 Star Calving Ease Dec 1st Weight: 774

Reg. #4606997
228K/BOLD
02-26-2022

Lot **GGP**

22

Dahlke Got R Done 215K

BECKTON LIKABLE C643 L3
SIRE: 5L GOT R DONE 2146 - 313F
5L DYNABELLE 1804 - 2146
5L BOURNE 117-48A
DAM: DAHLKE MS SARA 83G OF 120U
DAHLKE DAKOTA SARA 120U

Another Got R Done son that should be a sure shot heifer bull. These sons are pretty consistent in their calving ease traits combining a good skull with smooth shoulders. This guy has a high libido, with a good neck crest and should be the type of bull that gets all the cows bred in short order.



Ribeye	Marbling
14-16"	3-48%

CED	BW	WW	YW	Milk	HPG	Stay	Marb	CW	REA	ProS	HB	GM
14	-2.3	60	95	36	15	12	-72	11	-24	97	46	52
37%	41%	54%	54%	1%	6%	85%	6%	89%	26%	42%	69%	22%

BW: 78 WW: 650 YW: 1075 ADG Ratio: 97
Dam's Calving Interval: 353 Days (Stuck AI 2 out of 2) Dam's Age: 4
5 Star Calving Ease Dec 1st Weight: 802

Reg. #4606979
215K/BOLD
02-07-2022

Dahlke Top Gun 211K

GGP

Lot
23



5L ADVANTAGE 3267-221Y
SIRE: 5L TOPGUN
5L BLACK ADINA 525-560 (TC STOCKMAN SIRE)

LJC MERLIN 937Z
DAM: DAHLKE ROSIE GIRL 38E
DAHLKE ROSIE 266C

These Rosie females are all deep red in color and tend to pass that trait on in a consistent manner. This 5L Topgun son is no different. A little extra bone, length of body and frame size, we expect this bull to sire the type of feeder cattle that sell really well at the barn. His dam has a real tight udder with ideal teat size. Use this bull to fix udder problems.

CED	BW	WW	YW	Milk	HPG	Stay	Marb	CW	REA	ProS	HB	GM
15	-2.9	61	103	22	12	9	.49	38	.44	105	25	80
19%	30%	47%	36%	79%	32%	97%	33%	7%	6%	31%	94%	2%

Ribeye	Marbling
12.47"	3.49%

BW: 90 WW: 613 YW: 1082 ADG Ratio: 104
Dam's Calving Interval: 4 @ 357 Days (Stuck AI 3 out of 4) Dam's Age: 6
4 Star Calving Ease Dec. 1st Weight: 862

Reg. #4575777
211K/ARD
02-02-2022

Dahlke Power 86K

GGP

Lot
24



5L FIREPOWER 3320-86E
SIRE: LMG GILS POWER 0046
LUCHT BLOCKANA 419

DAHLKE EXPLOSION 14F ET
DAM: DAHLKE GDRA MISTY 72H
DAHLKE MISTY 47F

Our only son in the sale out of LMG Gills Power 0046. Power 0046 is sired by the \$47,000 Firepower bull out of the original Blockana cow family. 86K is a long sided bull with an ideal calving ease skull and shoulder. The young dam who raised this bull on her first try is a real favorite here. She has a show stopping phenotype that transitions so well out of her shoulder into her neck with big correct feet along with a picture perfect udder design.

CED	BW	WW	YW	Milk	HPG	Stay	Marb	CW	REA	ProS	HB	GM
14	-2.8	65	105	28	12	13	.69	28	.15	100	43	56
30%	32%	32%	32%	29%	38%	78%	8%	32%	45%	38%	73%	16%

Ribeye	Marbling
10.87"	2.78%



BW: 81 WW: 784 YW: 1205 ADG Ratio: 97
Dam's Calving Interval: Bred Back AI as a Heifer Dam's Age: 3
5 Star Calving Ease Dec. 1st Weight: 774

Reg. #4619931
86K/GDRA
03-17-2022

Dahlke Explode 250K

GGP

Lot
25



DAHLKE EXPLOSION 14F ET
SIRE: DAHLKE EXPLOSIVE 041H
3SCC HEIDI A104

FEDDES BIG SKY R9
DAM: DAHLKE MS SANDY 29D
DAHLKE MS SANDY 228A

If you like added muscle and base width then take a look at this guy. Big feet, wide pinned with added bone size are some of this bulls top attributes. Most of the EPD's rank in the top half of the breed. Dam is a solid 7 year old cow and the granddam is the great 228A, a 10 year old cow we talked so much about near the beginning of this catalog.

CED	BW	WW	YW	Milk	HPG	Stay	Marb	CW	REA	ProS	HB	GM
7	1.6	63	95	26	12	18	.42	35	.32	109	60	50
98%	96%	42%	54%	49%	33%	16%	47%	13%	15%	24%	41%	25%

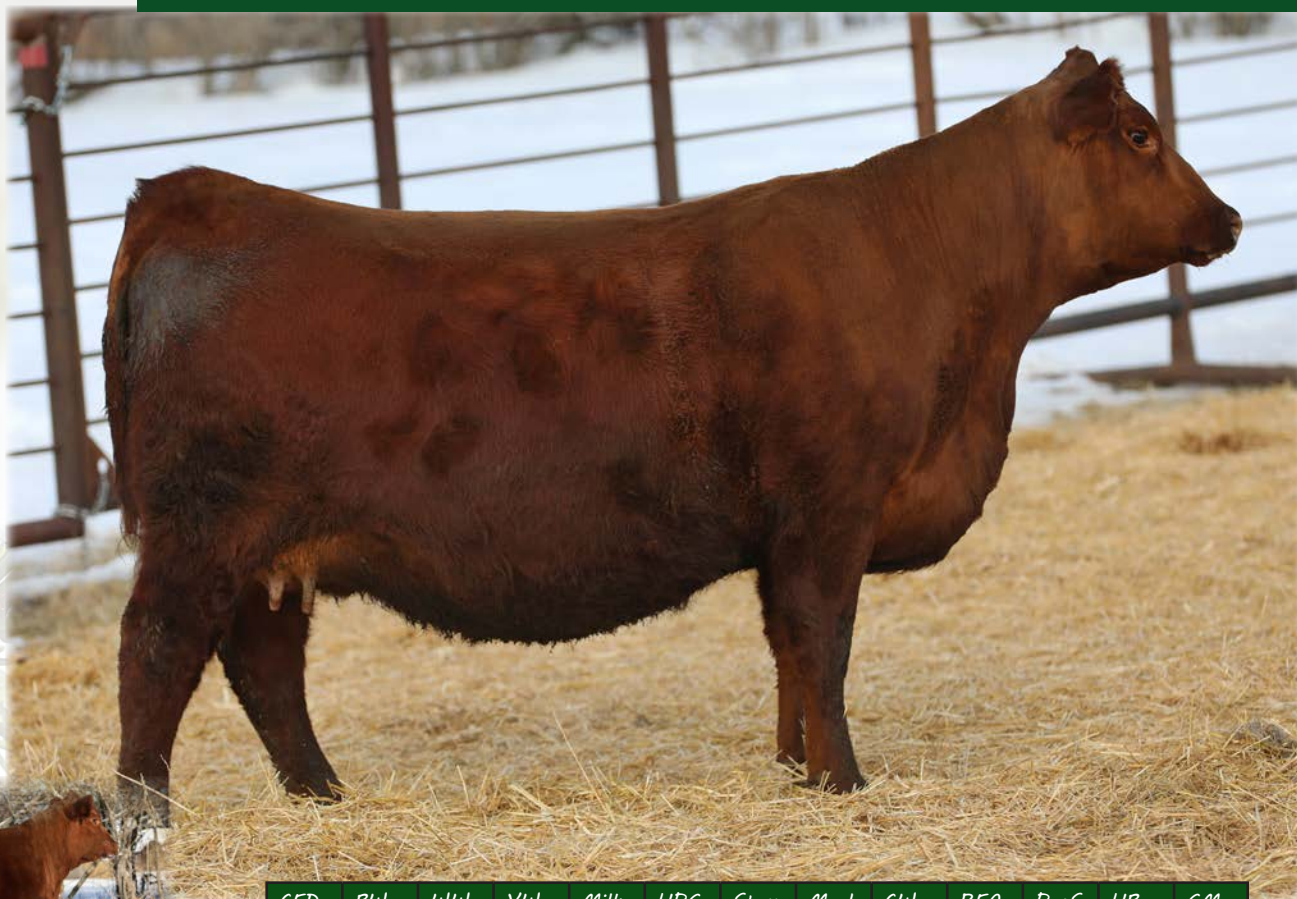
Ribeye	Marbling
11.73"	2.89%

BW: 94 WW: 568 YW: 1004 ADG Ratio: 91
Dam's Calving Interval: 5 @ 366 Days Dam's Age: 7
3 Star Calving Ease Dec. 1st Weight: 832

Reg. #4606947
250K/BOLD
03-27-2022

Lot
26

Dahlke Ms Hilton 146J



CED	BW	WW	YW	Milk	HPG	Stay	Marb	CW	REA	ProS	HB	GM
14	-2.0	76	120	29	12	15	.56	32	.27	112	57	54
27%	47%	6%	10%	19%	42%	53%	20%	18%	21%	21%	45%	19%



Maternal Sister to Lot 26

BW: 64 WW: 724 YW: 910

Reg. #4448787

Dam's Calving Interval: Donor

Dam's Age: 4

146J/BOLD

Calved on March 2nd with a bull calf sired by Dahlke Outcome (Semex)

03-17-2021

BIEBER CL ATOMIC C218
SIRE: DAHLKE ATOMIC 85G
DAHLKE PROFIT BRIDGE 42E

SAV RAINDANCE 6848
DAM: DAHLKE MS HILTON 74G OF 263C
DAHLKE MS HILTON 263C



Dahlke Outcome 016H - 2nd high selling bull in 2021 to Semex Beef - Service sire to lot 26

We start off the heifer offering with an absolute sale feature. We didnt sell any bred females on any other special sales in the last year with the intention of saving some top females for this sale. Ms Hilton 146J comes right off the top as she has been a real head turner since an early age. She's dark cherry red in color with a sweetheart disposition in a moderate frame package. Numerically shes not extreme in any one catagory but ranks above average in nearly every trait. We have flushed her dam, granddam & great granddam as they are all superior producers with good feet and loaded with fertility. Her pedigree is unique in that she is a red hided granddaughter of SAV Raindance, a son of the leading income producing angus cow SAV Blackcap May 4136. We sold a maternal sister as a heifer calf this fall on the ND Red Select sale to Namken Red Angus for \$6,000. We are anxiously awaiting for her to calf as she is bred to the new stud bull we sold to Semex beef in 2021, Dahlke Outcome 016H. The first calves from him are proving him to be an excellent heifer safe bull that hit the ground running. We plan to use this bull even harder this spring as we are really liking what we see from this young sire. This girl deserves to be in a registered herd or on a halter. Buy with confidence.

Ribeye	Marbling
9.66"	4.07%



Dahlke Ms Lovebird 104J

SIRE: RED U2 DOMINION
RED U2 HIDE HO 459D

DAM: DAHLKE MS LOVEBIRD 19F
DAHLKE LOVE BIRD 200Y

One of the first bred females from Red U2 Dominion to be offered on auction. Ms Lovebird 104J is a moderate made female that is correct in her angles and points all four toes straight forward. Shes a granddaughter of the great 200Y which is the only cow we've ever held open for flushing purposes. We sold a maternal sister to 104J on last years sale that sold to Rohrichs Cutting Edge ranch, where she raised a \$5,500 bull for them on her first try. Expect 104J to be a heavy milker with the structure to last a long time. 50% chance of her calf being red or black.



Lot
27



Red U2 Dominion - sire of lot 27

CED	BW	WW	YW	Milk	HPG	Stay	Marb	CW	REA	ProS	HB	GM
12	-0.9	63	110	32	9	17	.41	33	.30	99	50	49
60%	67%	42%	23%	6%	90%	32%	50%	17%	17%	39%	60%	27%

Ribeye	Marbling
10.01"	4.36%

BW: 67 WW: 552 YW: 827

Dam's Calving Interval: 3 @ 368 Days (All AI Sired) Dams Age: 5
Due 4-19-2023 Bred to 5L Capitalist 525-225F

Reg. #4448757
104J/BOLD
01-25-2021



Pictured Left:
Dahlke Ms Hilton 263C
Maternal sister to the
dam of 27. Granddam to
lot 26.

Dahlke Ms Sara 101J

SIRE: SAV RAINDANCE 6848
SAV BLACKCAP MAY 4136

DAM: DAHLKE DAKOTA SARA 120U
DAHLKE MAJOR SARA 75S

The first daughter out of our 120U matron to ever be offered on a sale. 101J is a black red carrier out of the 15 year old Sara 120U, sired by SAV Raindance 6848. She has the same athletic stature as her dam and bred AI on her try. She calved to the \$23,500 Rockefeller bull we sold to NCJ Cattle & Semex in 2021. The calf is a heifer and is a black red carrier as well.

GGP

Lot
28



SAV Raindance - Sire of lot 28

CED	BW	WW	YW	Milk	HPG	Stay	Marb	CW	REA	ProS	HB	GM
14	-0.8	69	104	27	12	15	.20	28	.16	85	65	21
26%	70%	20%	35%	41%	44%	50%	94%	31%	42%	62%	30%	83%

Ribeye	Marbling
8.42"	2.91%

BW: 53 WW: 464 YW: 691

Dam's Calving Interval: 13 @ 364 Days (All AI Sired) Dam's Age: 15
Calved 2-1-2023 with a Heifer calf sired by Dahlke Rockefeller 009H. Calf is a Black Red Carrier.

Reg. #4410603
101J/ARD
01-09-2021

Dahlke Ms Hannah 144J

This girl is one of the most docile females I've ever been around, and she's been like that since she was a young calf. She calved with twins and has been just a joy to be around as we kept her in the calving barn for a few days to make sure the calves got going good. She stands down on a good designed foot that we've come to expect from the capitalist progeny. Excellent calving ease traits on this nice red heifer. Calved on 1-17 with opposite sex twins sired by Dahlke Rockefeller 009H, the \$23,500 sire at Semex.

LD CAPITALIST 316
SIRE: 5L CAPITALIST 525-225F
5L ADINA 853-525
BROWN COMMITMENT S7206
DAM: DAHLKE MS HANNAH 217A
3SCC HANNAH Y18



Lot
29

CED	BW	WW	YW	Milk	HPG	Stay	Marb	CW	REA	ProS	HB	GM
18	-5.2	55	88	24	11	14	.73	25	.07	121	59	62
2%	5%	72%	70%	68%	63%	67%	6%	44%	63%	12%	42%	10%

Ribeye	Marbling
9.12"	4.58%

BW: 64 WW: 545 YW: 806
Dam's Calving Interval: 7 @ 361 Days (3 out of 7 AI Sired) Dam's Age: 9
Calved 1-17-2023 with Twins Sired by Dahlke Rockefeller 009H (Semex)

Reg. #4448727
144J/BOLD
03-15-2021

Dahlke Ms Sara 143J

These Capitalist daughters are turning out even better than we had hoped. They are sound footed, snug uddered and fertile. This girl was one of the first heifers to start cycling last fall after weaning and she settled first cycle AI. Her dam is an elegant fronted female that is off to a great start, raising all heifers so far. We retained her first heifer and now are offering her 2nd. She calved on 2-10 with a bull calf sired by Red Six Mile Mossy Oak, a semex stud. This capitalist daughter is also red hided.

LD CAPITALIST 316
SIRE: 5L CAPITALIST 525-225F
5L ADINA 853-525
BIEBER CL ATOMIC C218
DAM: DAHLKE MS FAITH 2F
DAHLKE MS FAITH 2D

CED	BW	WW	YW	Milk	HPG	Stay	Marb	CW	REA	ProS	HB	GM
13	-1.2	68	111	24	10	11	.34	30	.19	66	29	37
39%	63%	23%	22%	65%	79%	91%	67%	25%	36%	88%	92%	50%

Ribeye	Marbling
10.03"	3.25%

BW: 81 WW: 586 YW: 839
Dam's Calving Interval: 3 @ 346 Days (2 out of 3 AI Sired) Dam's Age: 5
Calved 2-10-2023 with a Bull calf sired by Six Mile Mossy Oak 175H (Semex)

Reg. #4448765
143J/BOLD
03-10-2021

Dahlke Ms TJ 130J

Spartacus A193 is a proven sire at Select Sires known for producing easy fleshing cattle with excellent dispositions. 130J fits the mold as she had almost twice the fat cover on her compared to the average when we carcass ultrasounded her heifer group in March of 2022. Her dam produced until she was 10 years old and stuck AI 7 out of 8 years. We do a lot of AI-ing off of natural heats and were never able to catch this one in heat but she did breed naturally to the bull a couple days after turn out. Expect that same top tier fertility as her mother.

BIEBER ROUSE SAMURAI X22
SIRE: BIEBER SPARTACUS A193
BIEBER TILLY 233U
LSF WIDE SPREAD 0052X
DAM: DAHLKE MS TJ 207Z
NSFR TJ X24

CED	BW	WW	YW	Milk	HPG	Stay	Marb	CW	REA	ProS	HB	GM
16	-4.3	65	105	26	10	18	.54	25	.13	110	71	39
12%	11%	32%	32%	43%	83%	22%	23%	44%	49%	23%	20%	46%

Ribeye	Marbling
8.90"	3.67%

BW: 73 WW: 569 YW: 788
Dam's Calving Interval: 8 @ 362 Days (7 out of 8 AI Sired) Dam's Age: 10
Due 3-10-2023 Bred to 5L Got R Done 212J

Reg. #4448723
130J/BOLD
02-26-2021

Dahlke Ms Birdie 129J



Out of one of my favorite cows, 23F, I expect Ms Birdie 129J to make some happy new owners. Expect good feet, a sound udder, and a quiet disposition on this moderate made female. She is sired by the good maternal bull, Red U2 Malbec, a bull that comes from the Unger crew based out of Canada that was purchased by Genex for \$46,000. Malbec is a Reckoning son out of a good Copenhagen daughter.

RED U2 RECKONING 149A
SIRE: RED U2 MALBEC 195D
RED U2 MABEL 60A
BIEBER DEEP END B597
DAM: DAHLKE MS BIRDIE 23F
DAHLKE MS BIRDIE 233B

CED	BW	WW	YW	Milk	HPG	Stay	Marb	CW	REA	ProS	HB	GM
18	-4.8	63	97	27	9	15	.46	26	.28	113	75	38
4%	8%	39%	50%	37%	92%	50%	38%	40%	20%	20%	15%	48%

Ribeye	Marbling
9.70"	2.55%

BW: 59 WW: 529 YW: 759
Dam's Calving Interval: 3 @ 354 Days (All AI Sired) Dam's Age: 5
Due 3-20-2023 Bred to Dahlke Carnegie 154J

Reg. #4410613
129J/BOLD
02-26-2021

Lot
32

Commercial Heifer 195J

Lot
33

*AI Sired by 9 Mile Franchise
Commercial Red Angus Bred Heifer
Due Mid April to Mid May to 5L Got R Done 212J*

Commercial Heifer 184J

Lot
34

*Sired by Pie Cinch son
Commercial Red Angus Bred Heifer
Due Mid April to Mid May to 5L Got R Done 212J*

Commercial Heifer 188J

Lot
35

*Sired by Pie Cinch son
Commercial Red Angus Bred Heifer
Due Mid April to Mid May to 5L Got R Done 212J*

RED ANGUS FCCP MARKETING PROGRAMS

The Red Angus Feeder Calf Certification Program is the first step in differentiating your cattle to buyers, feedlots and packers.

Experience industry-leading return on investment for just the cost of an ear tag
– with no enrollment fees.

The Red Angus Association of America Marketing Team offers assistance to Red Angus bull customers at no charge.

Feeder Calf Certification Program



- Traceability to at least 50% Red Angus genetics
- Source verified to ranch of origin
- Group age verified

Eligible for Choice+ and G.O. Red Grids
No enrollment fee, 99¢/tag
840-compliant EIDs available upon request

**GENETICS
SOURCE • AGE**

RED ANGUS
RANCH TESTED. RANCHER TRUSTED.
RedAngus.org • (940) 226-4762

Top Bulls for each EPD

ProS

214K -2%
245K -3%
225K - 4%
213K - 5%
85K - 7%
226K - 13%

CED

214K -1%
85K - 2%
213K - 4%
205K - 14%
211K - 19%
243K - 21%
228K - 30%

Milk

221K - 1%
215K - 1%
228K - 2%
208K - 3%
205K - 4%
223K - 4%
251K - 11%
226K - 11%

Marb

210K - 2%
85K - 3%
213K - 4%
215K - 6%
228K - 8%
86K - 8%
214K - 9%

HB

213K - 12%
85K - 13%
245K - 16%
214K - 17%
225K - 17%
226K - 20%
210K - 21%
251K - 24%

WW

231K -1%
245K -2%
205K - 2%
251K - 3%
218K - 4%
225K - 4%
238K - 6%
204K - 15%
212K - 15%

HPG

251K -4%
226K -4%
231K - 6%
215K - 6%
218K - 10%
221K - 14%
243K - 15%
228K - 18%

REA

231K - 1%
254K - 4%
211K - 6%
214K - 6%
218K - 8%
226K - 9%
238K - 13%
250K - 15%

GM

211K -2%
214K -4%
245K - 7%
225K - 8%
86K - 16%
213K - 17%

YW

231K -1%
245K -2%
205K - 1%
225K - 3%
218K - 4%
251K - 4%
214K - 7%
238K - 8%
212K - 8%

BW

85K -1%
213K - 4%
214K - 7%
204K - 23%
225K - 26%
211K - 30%
245K - 30%

CW

231K - 1%
245K - 1%
225K - 1%
204K - 4%
238K - 6%
211K - 7%
205K - 8%
254K - 11%
226K - 11%

231K - Lot 1
212K - Lot 2
218K - Lot 3
251K - Lot 4
226K - Lot 5
214K - Lot 6
223K - Lot 7
208K - Lot 8
84K - Lot 9
205K - Lot 10
204K - Lot 11
245K - Lot 12
225K - Lot 13
238K - Lot 14
254K - Lot 15
243K - Lot 16
210K - Lot 17
213K - Lot 18
85K - Lot 19
221K - Lot 20
228K - Lot 21
215K - Lot 22
211K - Lot 23
86K - Lot 24
250K - Lot 25

RED ANGUS GUIDE TO EPDS

RedAngus.org

ProS..... Profitability and Sustainability is an all-purpose index that predicts average economic differences in all segments in the beef supply chain. This index is a combination of the breeding objectives modeled in the HerdBuilder and GridMaster selection indexes. In this index, replacement heifers are retained from within the herd and all remaining progeny are fed out to slaughter and sold on a quality-based grid. Traits included in this index include calving ease, growth, HPG, STAY, Mature Weight, Dry Matter Intake and carcass traits. The resulting index is expressed in dollars per head born (Index/High Value).

HB HerdBuilder is a maternal selection index that predicts the economic differences of animals for traits that are important from conception through weaning. Expressed as dollars per head born, HB is calculated based on the scenario that bulls are mated to heifers and cows, replacement heifers are retained and all remaining progeny are marketed at weaning. Traits included in the HB index include Calving Ease Direct, Calving Ease Maternal, Weaning Weight, Milk, Mature Weight, Heifer Pregnancy and Stayability (Index/High Value).

GM..... GridMaster is a selection index that predicts the average economic difference of non-replacement calves through the post-weaning phase of production. GM places selection pressure on growth, feedyard performance and carcass traits. Expressed as dollars per head born, GM is calculated based on the scenario that progeny are fed out to slaughter and marketed on a quality-based carcass grid. Traits included in GM include Average Daily Gain, Carcass Weight, Dry Matter Intake, Marbling, Back Fat and Rib Eye Area (Index/High Value).

CED..... Calving Ease Direct predicts differences in the percent of calves born unassisted out of 2-year-old dams. (Percent/High Value)

BW Birth Weight predicts differences in actual birth weight of progeny. (Pounds/Low Value)

WW Weaning Weight predicts differences in 205-day weaning weight. (Pounds/High Value)

YW Yearling Weight predicts differences in 365-day yearling weight. (Pounds/High Value)

ADG..... Average Daily Gain predicts differences in weight gain between 205 and 365 days of age. (Pounds/High Value)

DMI..... Dry Matter Intake predicts differences in daily feed intake as measured in a feedlot during the post-weaning period. (Pounds/Low Value)

MILK Milk predicts differences in weaning weight attributed to the milking ability of the animal's daughters. (Pounds/High Value)

ME Maintenance Energy predicts the difference in maintenance energy requirements. (Mcal per Month/Low Value)

HPG..... Heifer Pregnancy predicts differences in the percent of daughters who are able to conceive and calve at 2 years of age following exposure to breeding. (Percent/High Value)

CEM..... Calving Ease Maternal predicts differences in the percent of daughters who are able to calve unassisted as 2-year-old heifers. (Percent/High Value)

STAY..... Stayability predicts differences in the ability of an animals' retained daughters to remain productive in the herd – calve every year – through 6 years of age. (Percent/High Value)

MARB.... Marbling predicts differences in marbling score – amount of intramuscular fat measured at the 13th rib. (Marbling Score Units/High Value)

YG..... Yield Grade predicts differences in USDA Yield Grade, which is calculated using CW, REA and Fat. (Yield Grade Units/Low Value)

CW Carcass Weight predicts differences in actual hot carcass weight. (Pounds/High Value)

REA Ribeye Area predicts differences in square inches of ribeye area measured at the 13th rib. (Square Inches/High Value)

FAT..... Fat predicts differences in the depth of backfat measured between the 12th and 13th ribs. (Inches/Low Value)

Dahlke Red Angus
19505 400th street
Bagley, MN 56621

Dahlke Bulls are Maternal Bulls

